

Teacher's Notes

Do you believe...?

Interface

Type of activity: speaking, vocabulary, reading survey results

Focus: vocabulary and discussion connected to paranormal phenomena

Level: pre-intermediate+ and higher

Time: 45 minutes

Preparation:

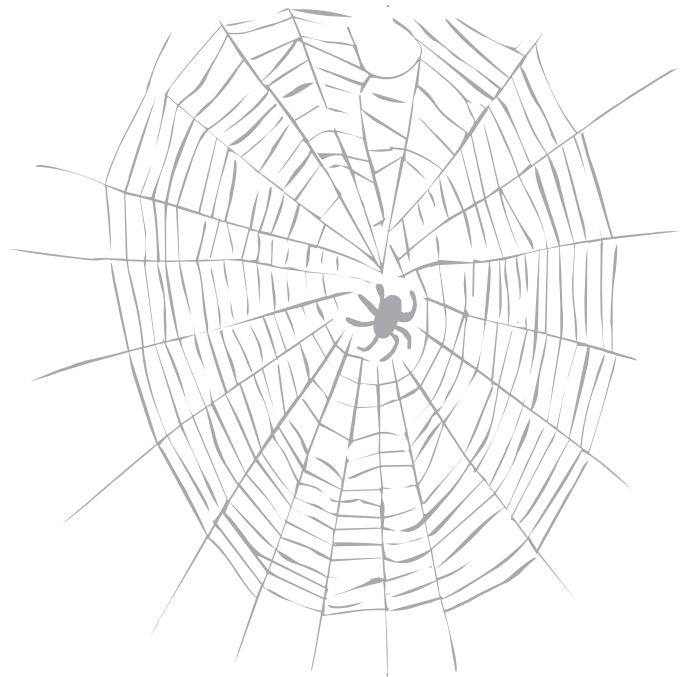
- copy one Student's Worksheet per student

Procedure:

1. Ask the students if they have ever seen a ghost or experienced anything that couldn't be explained. Elicit their general attitude towards paranormal phenomena and list on the board any examples that appear during the discussion.
2. Distribute the Student's Worksheets. Draw the students' attention to the vocabulary in the first task and elicit or explain the meanings of any unfamiliar words or phrases. Next, put the students into pairs and ask them to discuss all of the items in the list, saying if they believe in the paranormal phenomena or not, and why. Monitor as they do this, then collect feedback.
3. Ask the students to study the results of the survey in Task 2 in pairs and find answers to the three questions below the table. Check with the whole group, developing the discussion - why do so many people tend to believe in certain paranormal phenomena, but not others?

Key: *believed: spiritual healing, demonic possession, haunted houses; disbelieved: witches, reincarnation, astrology, communicating with the dead; not sure: telepathy*

4. Ask the students to put away their worksheets. Ask them to work in small groups and brainstorm the possible reasons why people may believe in paranormal phenomena. Allow a few minutes for this, then collect feedback and develop the discussion. Finally, ask the students to look back at their worksheets, look at Task 3 and, in pairs, discuss the reasons listed. Collect feedback again.
5. Have a class survey on the belief in paranormal phenomena. Create new pairs and ask the students to complete the table in Task 2 with their partner's answers to the 'do you believe' question. Then ask the students to form groups of 4 or 5 and summarise their group results. Continue to join the groups until the students arrive at the overall class results. Turn the results into percentages - how do the students' attitudes compare with the results of the survey on the U.S. population?



Interface. Skuteczna nauka mówienia i pisania dzięki modelowym tekstom, wskazówkom i metodzie krok po kroku.

Szczegóły na: www.macmillan.pl/interface